



The Blivit House



System Specifications

- 5 Ton WaterFurnace NSW W-W Heat Pump with Symphony Monitoring
- Closed Vertical Ground Loop - (2) 400' Boreholes w/ 1 ¼" HDPE Loops
- 50 Gallon Buffer Tank with Direct To Load Piping
- HBX Controls
- Duplexed Magna3 VS Pumps with Zone Valves
- Radiant Floors in Slab - 1st Floor
- First Co Air Handler w/ Honeywell Zoning & Blue Duct
- SpacePak High Velocity Air Handler w/ Arzel Zoning & Exposed Spiral Duct
- Thermostats Integrated with Savant Home Automation System – radiant zones and air zones match so one thermostat controls all zone functions
- IBC Boiler for Domestic Hot Water and Auxiliary Heat

Design Challenges

- Slab on Grade – sub slab ductwork and radiant tubing
- Limited Mechanical Spaces
- Open Floor Plan – difficult duct runs
- Integration with Savant Home Automation System
- Custom Linear Floor Grilles and Mud-In Wall Registers



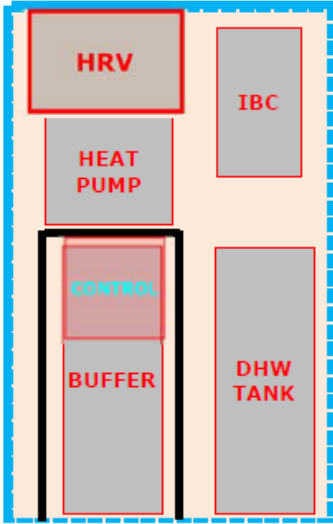
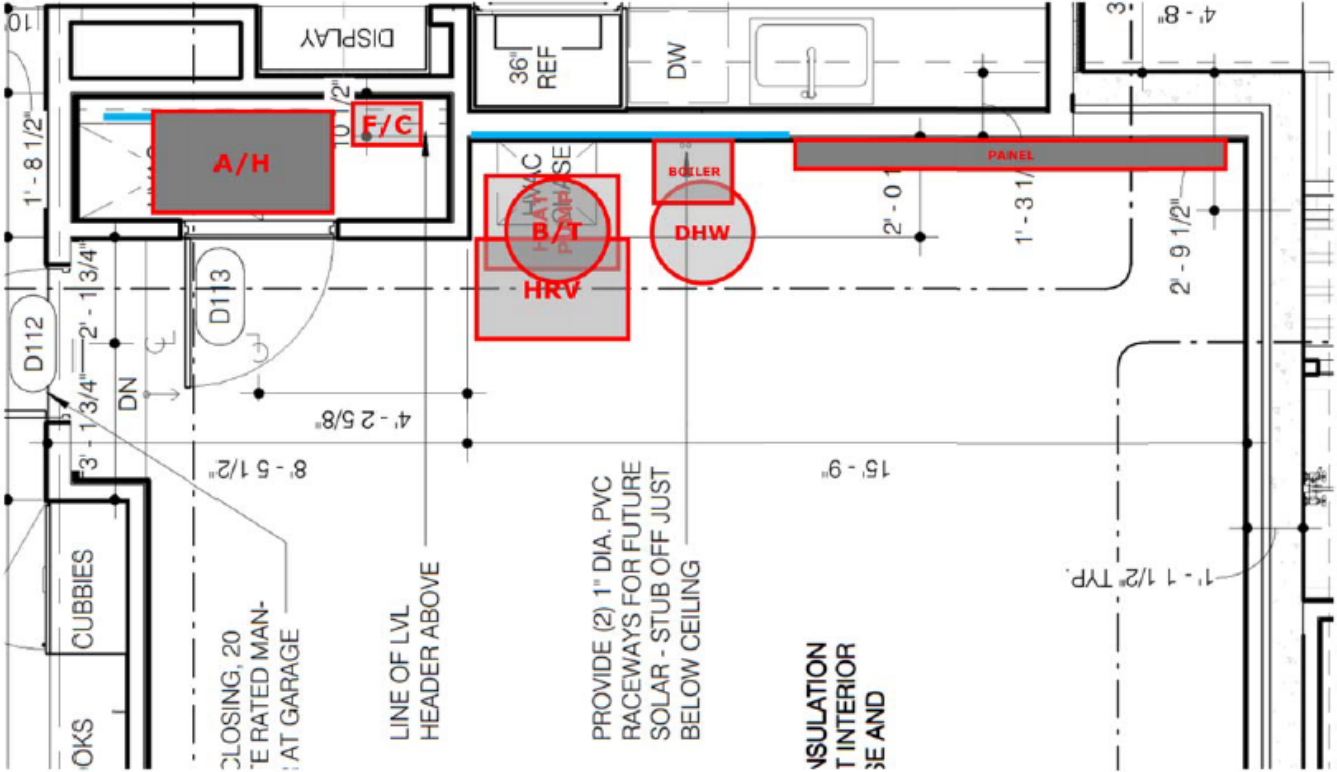
Blue Duct Underground Air Duct System



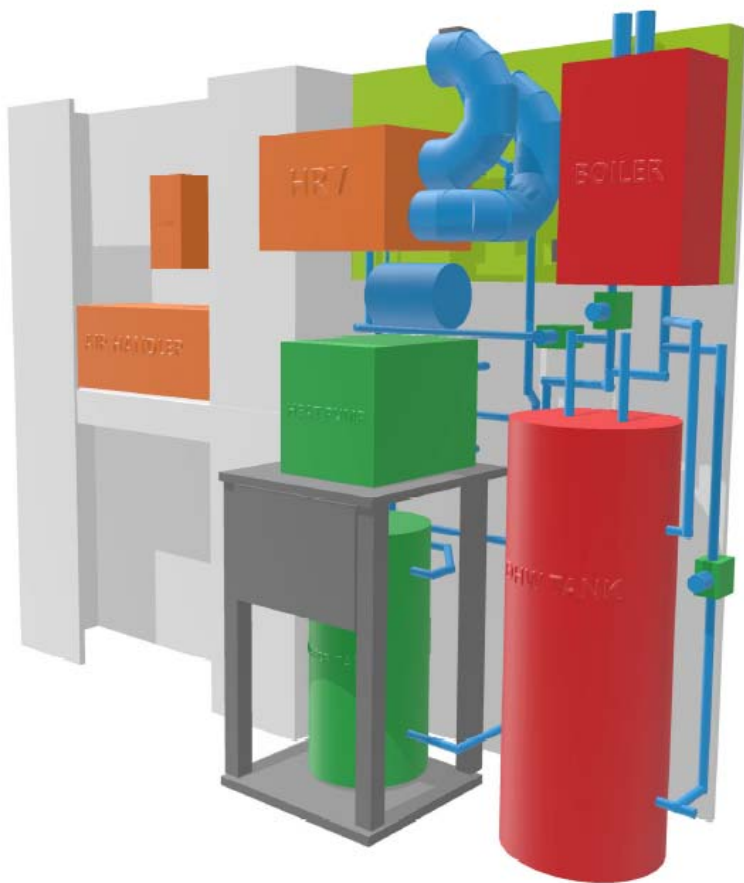
Radiant Floors



Limited Mechanical Spaces



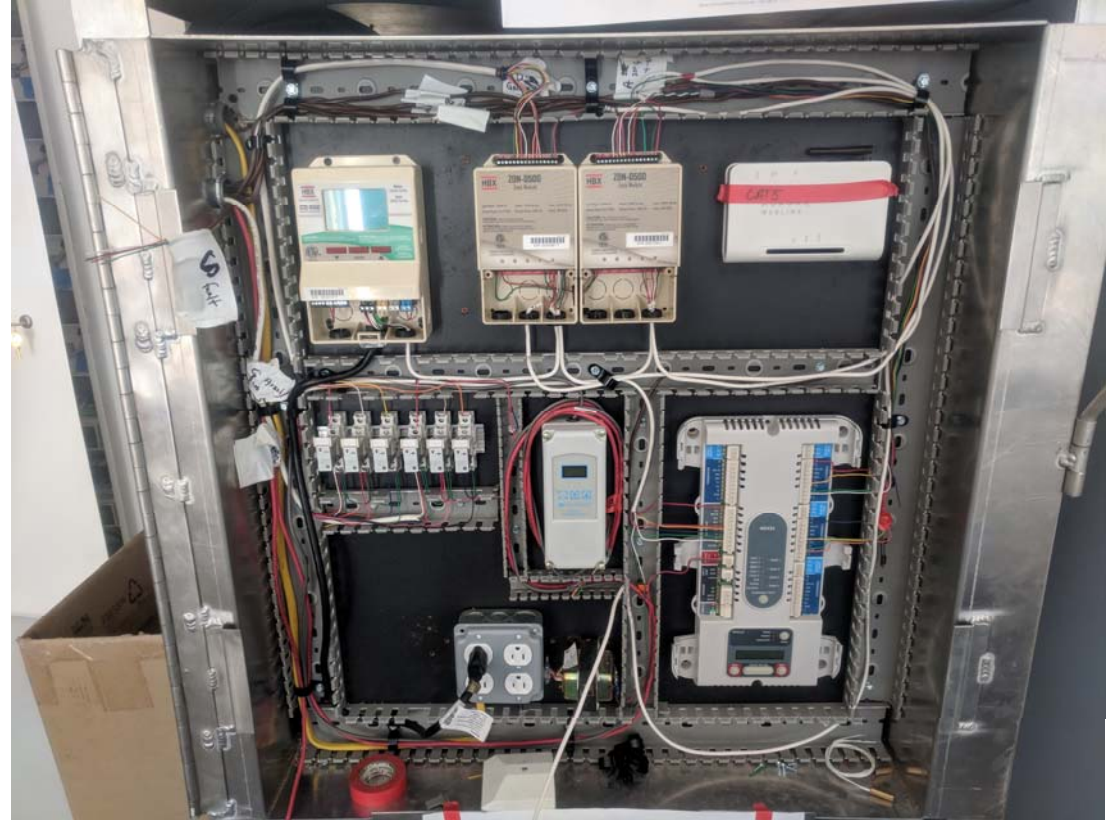
Limited Mechanical Spaces



Limited Mechanical Spaces



Custom Welded Heat Pump Stand w/ Hinged Control Panel



Open Floor Plans

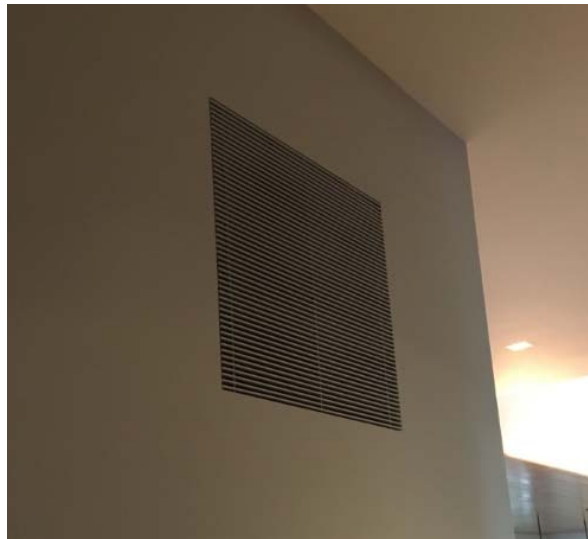


Integration with Savant Home Automation System

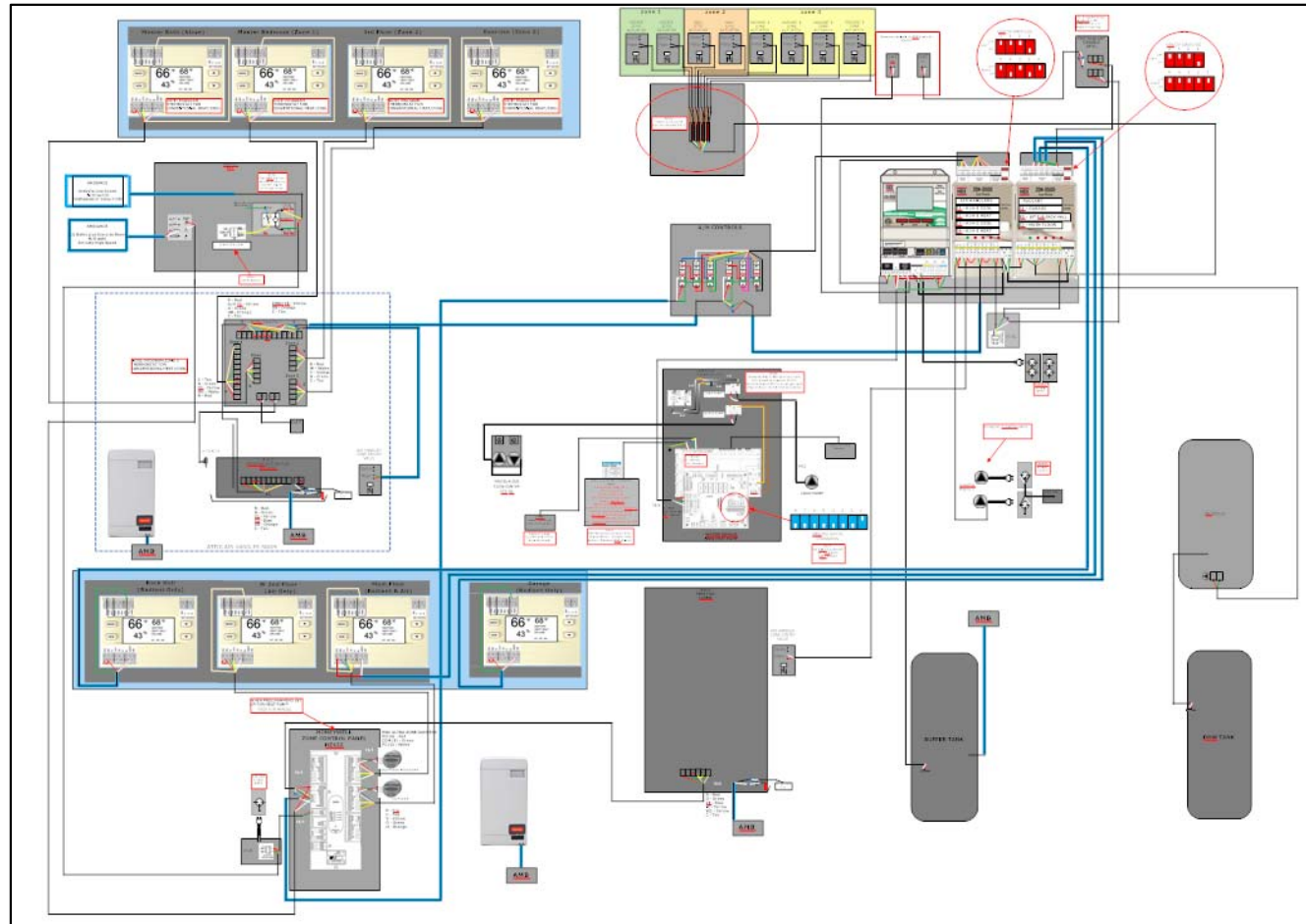
- Thermostats located in Mechanical Room w/ wall mount sensors
- Radiant zones and air zones match so one thermostat controls all zone functions
- HRV Control and Bathroom Exhaust Timers integrated



Custom Grilles and Registers



Wiring Diagram



Piping Diagram

