

Louisa May Alcott's

ORCHARD
HOUSE



Home of
Little Women

**GEOHERMAL
INSTALLATION AT
LOUISA MAY
ALCOTT'S ORCHARD
HOUSE**

Concord, MA



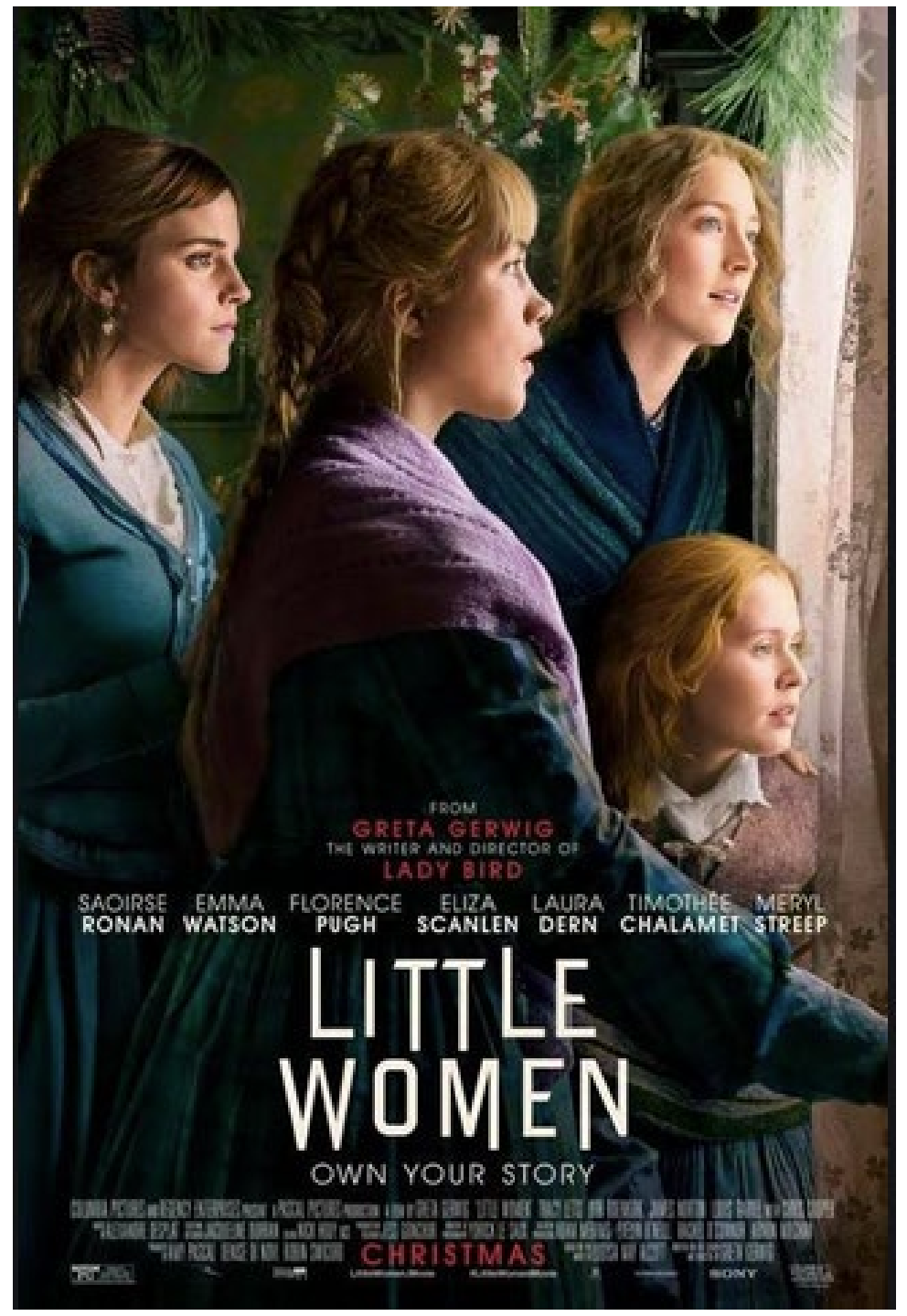


Photo Source: louisamayalcott.org





Facebook: Louisa May Alcott's Orchard House



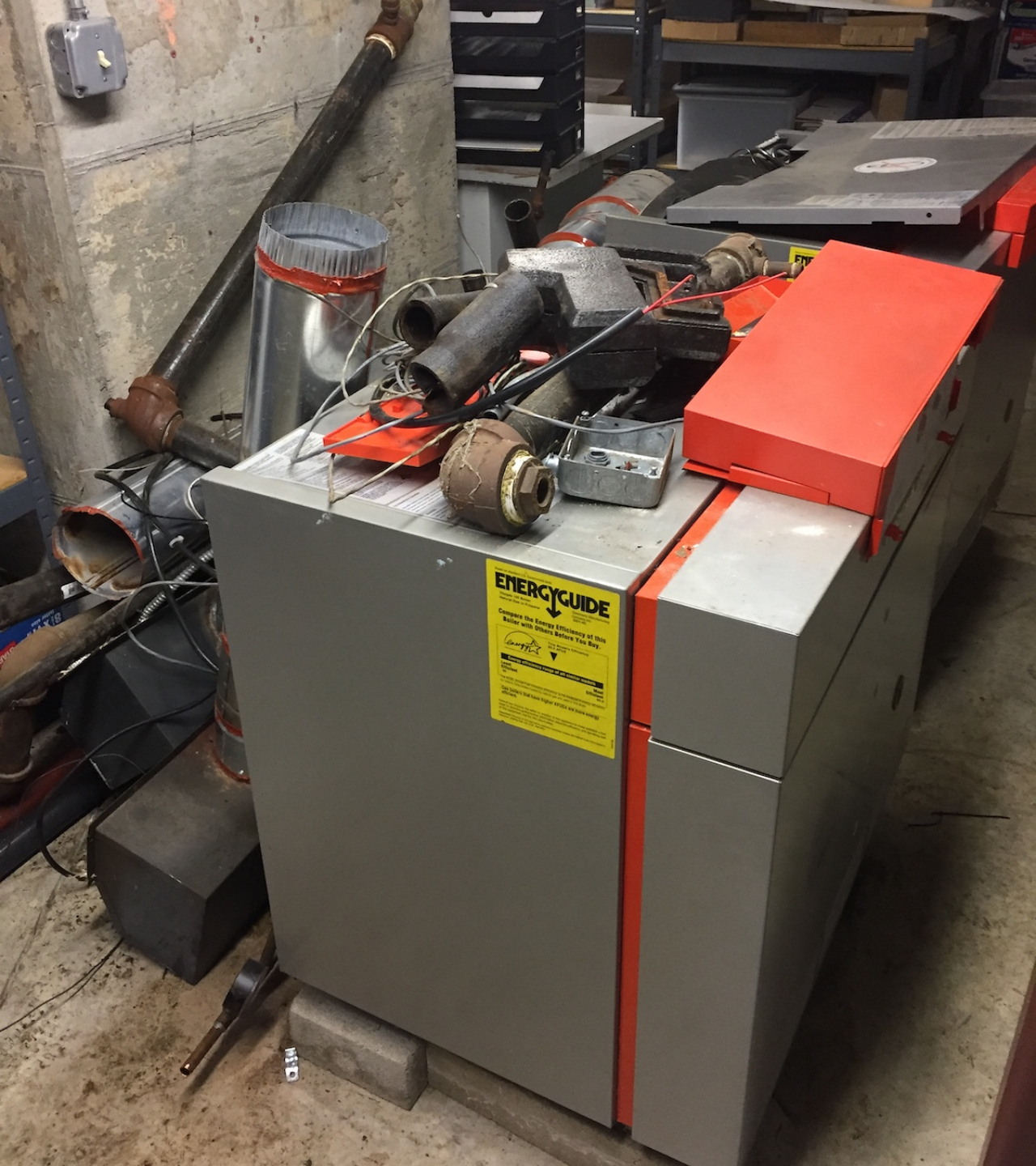
Why geothermal?

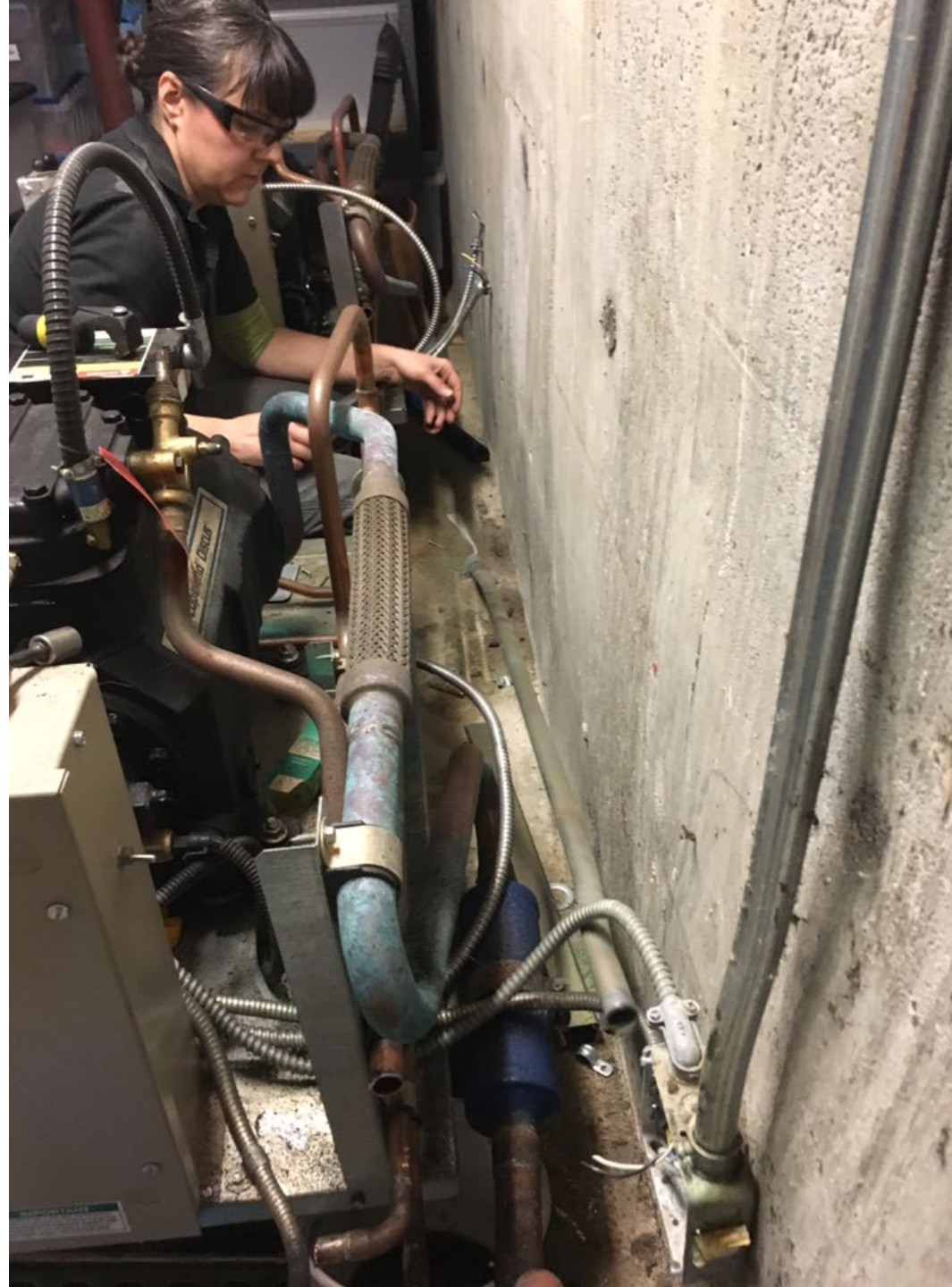
- Too many repairs needed to old system
- Old system too complicated
- Comfort - too cold in the winter, too hot in the summer
- Maintain historical integrity of property – inside and out
- Longevity and efficiency
- Continuation of Alcott's philosophical legacy











ELECTRIC USAGE HISTORY

Month	Days	Electric Use (kWh)	Elec. Usage per Day
-------	------	-----------------------	------------------------

07-18	32	1370	43
06-18	31	1666	54
05-18	29	2981	103
04-18	32	3126	98
03-18	27	2777	103
02-18	30	3081	103
01-18	63	6268	99
11-17	61	8378	137
09-17	60	12981	216
07-17	63	16223	258
05-17	61	9668	158
03-17	57	5696	100
01-17	63	6257	99

Bill Type

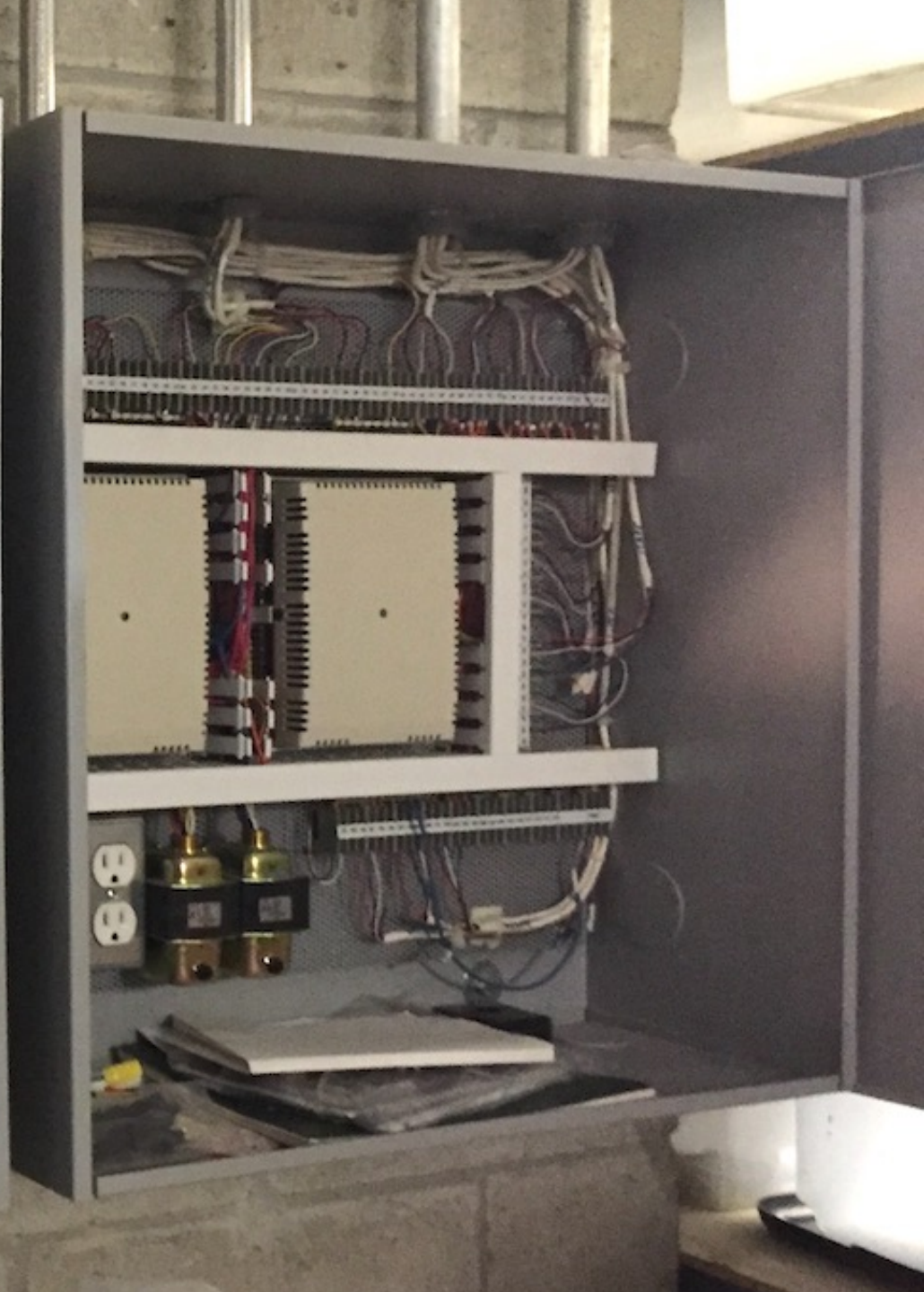
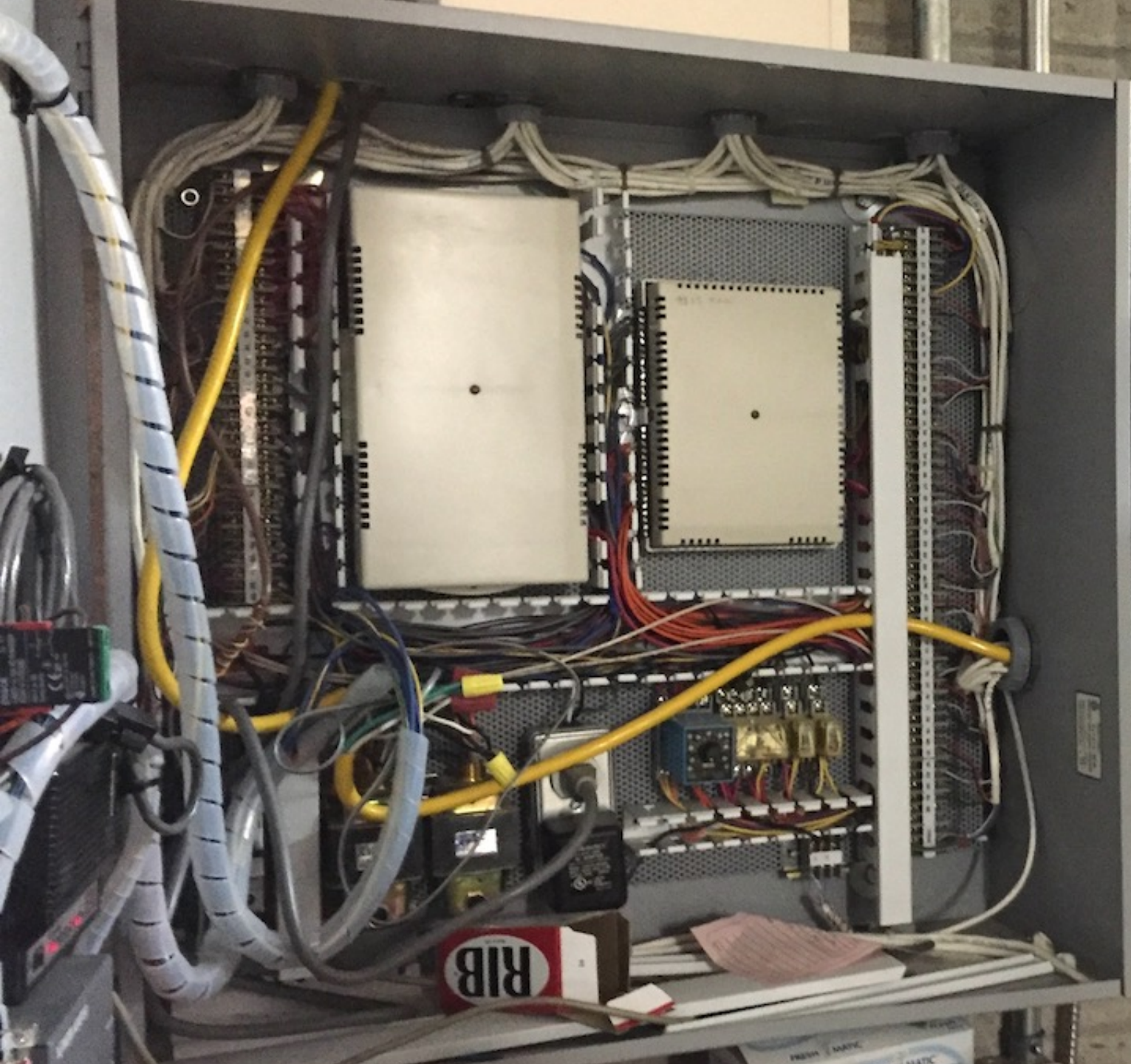
REGULAR

Account Type

SMALL GENERAL

MESSAGES: Air-source and ground-source
lower your heating and cooling costs
a discount from pre-qualified





Special Considerations During Installation:

- No aesthetic changes to the building allowed
- Business must stay open. Noise considerations.
- Heat or AC needed depending on season.
- Archaeological concerns















Facebook: Louisa May Alcott's Orchard House

24110 200 OM
REVISION: 08/01/03

1 2 3 4 5 6 7 8 9 10 11 12 13 14 15 16 17 18 19 20 21 22 23 24 25 26 27 28 29 30 31 32 33 34 35 36 37 38 39 40 41 42 43 44 45 46 47 48 49 50 51 52 53 54 55 56 57 58 59 60 61 62 63 64 65 66

GIFT SHOP
1:02PM Fri 7/3
72°
HUMIDITY: 66%



ZONE 1 MAIN WEST
IntelliZone Z1 1:02pm Fri 7/3
71°
HUMIDITY: 66%
MODE: STANDBY
FAN: OFF

ZONE 2 MAIN EAST

2ND FLOOR EAST
1:03PM Fri 7/3
73°
HUMIDITY: 66%
MODE: C-2
FAN: ON SPD-8



ZONE 1 2ND FLOOR WEST
IntelliZone Z2 1:02pm Fri 7/3
75°
HUMIDITY: 66%
MODE: C-4
FAN: ON SPD-7

ZONE 2 BASEMENT







CURRENT STATUS:

4:16 PM Fri 3/19 Eastern



Standby

THERMOSTAT SUMMARY



CONCORD, MA



Current Temp: 40°

EQUIPMENT SUMMARY

Series:

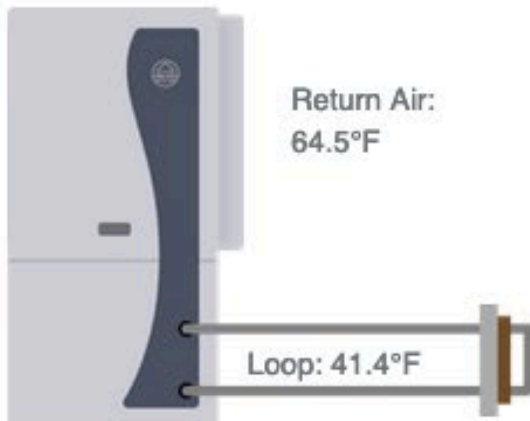
Model:

Serial #:

Supply Air: 78.1°F



Humidity
Level: 35%



Comp Speed
Off



Fan Motor
0



Aux Elect Heat
OFF

CURRENT ENERGY USE



Compressor
0 W



Fan Motor
0 W



Total Unit
Energy
0 W



Aux Elect Heat
0 W



Loop Pump
0 W

Saturday 56° 24°

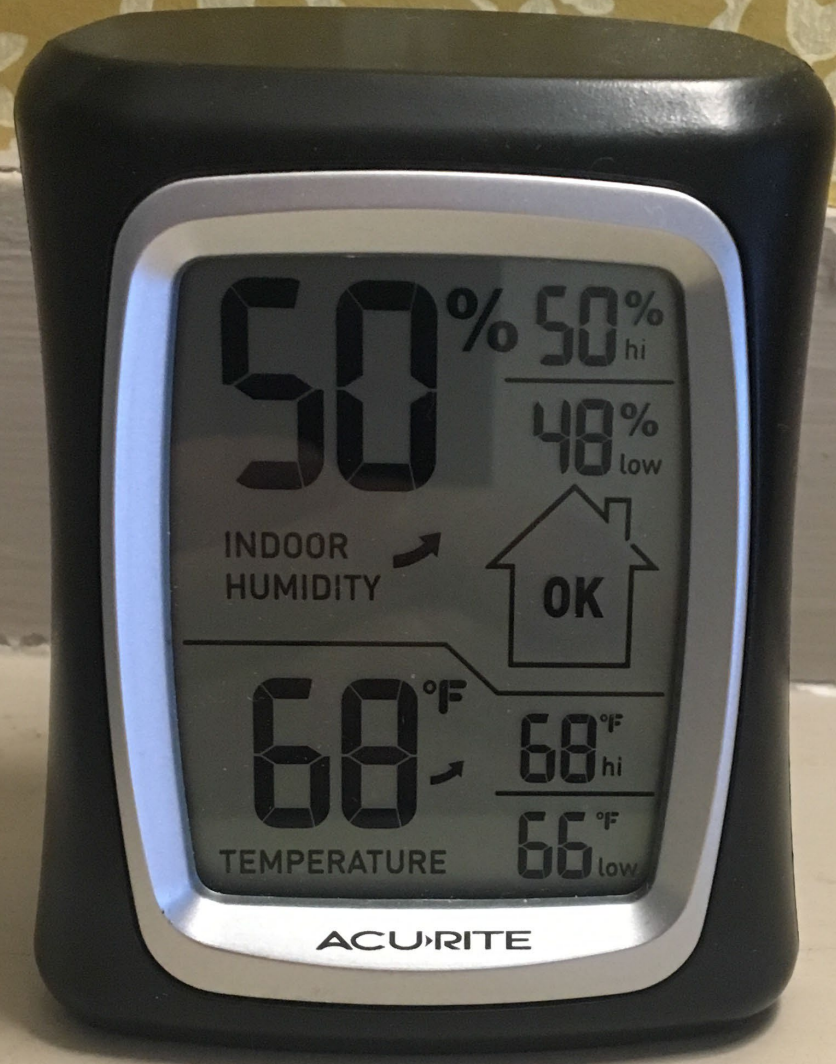
Sunday 60° 28°

Monday 60° 30°

Tuesday 64° 31°

Wednesday 61° 35°





50% 50% hi
48% low

INDOOR HUMIDITY



68°F 68°F hi
66°F low

TEMPERATURE

ACURITE

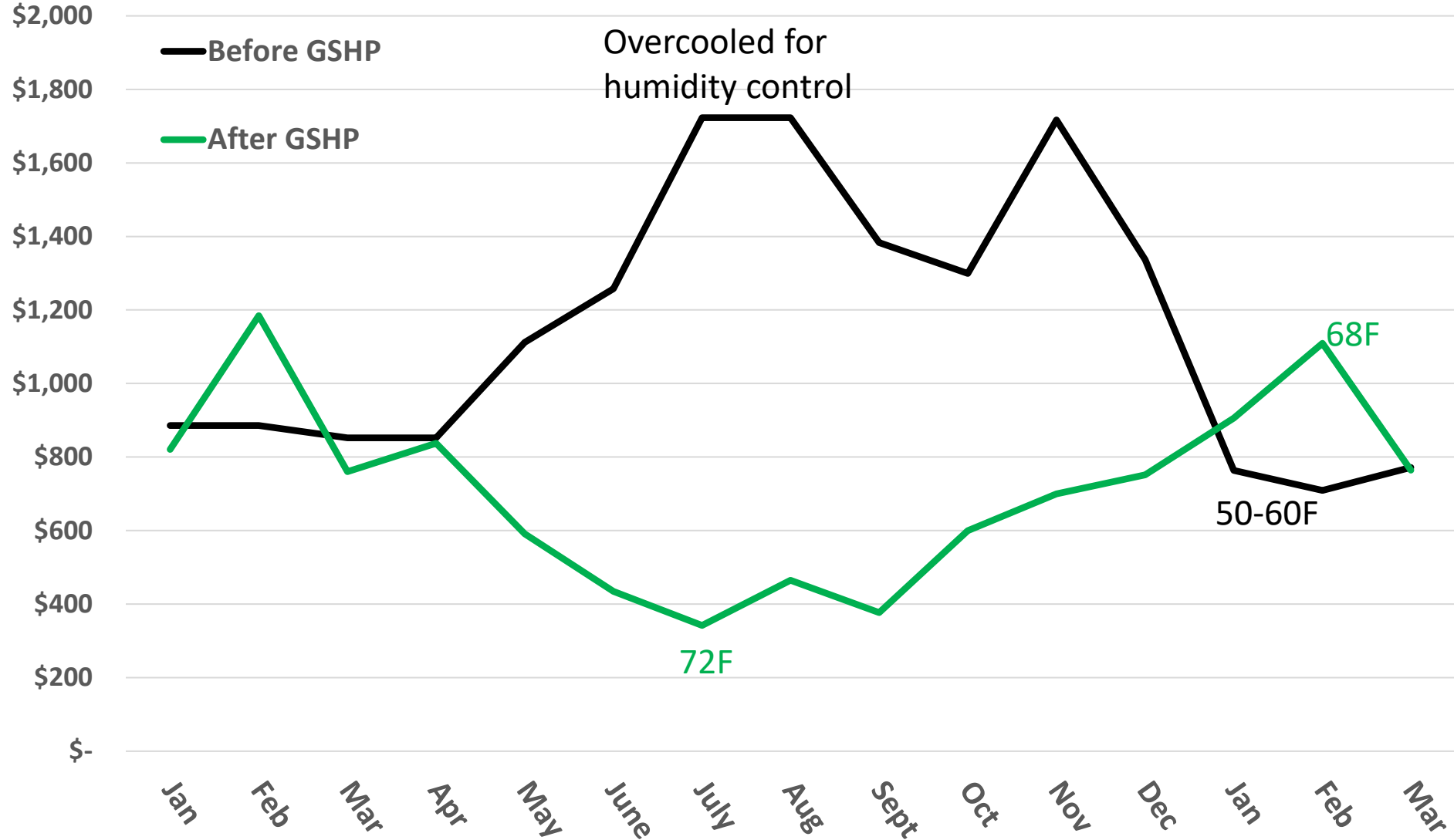


- 40 to 50% reduction in annual utility costs

- Gas bill eliminated

- Most savings from electricity use reduction

- Improved comfort!



SPECIAL THANKS

- Staff and volunteers of the Orchard House
 - Jay Powers and Trey Powers
 - Jan Turnquist
- Everyone who donated to the fundraising efforts
- Concord Community Preservation Committee
- UMass Boston Fiske Memorial Center for Archaeological Research
- Other Orchard House consultants
- BrightStar Heating Supply Co.
- Flagship Landworks
- Gap Mountain Drilling
- Concord Municipal Light Department





Facebook: Louisa May Alcott's Orchard House